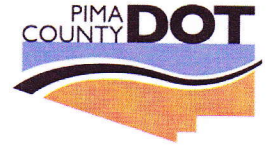




PIMA COUNTY
DEPARTMENT OF TRANSPORTATION
201 NORTH STONE AVENUE, FOURTH FLOOR
TUCSON, ARIZONA 85701-1207



PRISCILLA S. CORNELIO, P. E.
DIRECTOR

(520) 740-6410
FAX (520) 740-6439

July 30, 2010

Jean Gorman
1651 West Thunder Road
Vail, AZ 85730

Subject: Bicyclist Memorial Trailhead

Dear Ms. Gorman:

I wanted to give you an update on the status of the memorial trailhead project. As you know, we had an informational public meeting on May 24, 2010, to obtain community feedback regarding the proposed memorial trailhead to be located at McDonald Park. This meeting was well attended by neighbors and bicyclists and we received approximately 35 written comments, in addition to the comments we heard at the meeting. There was no clear consensus on the best location for the memorial trailhead although there was support for installation of bicycle lanes along Harrison Road. Some attendees (yourself included) indicated that if bike lanes were installed along Harrison, the McDonald Park location would be more acceptable.

After our review of the information received at the public meeting, we submitted an application for federal Transportation Enhancement monies through the Pima Association of Governments. These funds could fund the construction of bike lanes along Harrison Road thereby meeting the desires expressed by several of the surrounding community and meeting attendees. We recently learned that Pima County Department of Transportation is in the top three (3) for receiving Transportation Enhancement monies for the bike lanes along Harrison Road. With this high ranking, Pima County is almost assured of receiving the needed funding which the department felt was contingent for the selection of McDonald Park as the location for the memorial trailhead.

The department is now proceeding with implementation of the proposed memorial trailhead project located at McDonald Park. The scheme we are finalizing is based on the concept that had been developed with your assistance for the memorial trailhead located on Catalina Highway near Spruce Lane. It includes construction of a ramada on a concrete pad, a memorial, commemorative pavers, bike rack, benches, drinking fountain and addition of trees. Attached is a copy of the concept we intend to construct. This version is slightly different from the one presented at the meeting because it includes a paved bike connection to Prospect Lane to facilitate travel north and eliminates the parking area over the volleyball court and the sidewalk.

Jean Gorman
Bicyclist Memorial Trailhead
July 30, 2010
Page 2

The department is committed to construction of the memorial trailhead and your past efforts to advance this project are appreciated. We are completing the construction documents and expect to start construction in the early fall. We are confident that once bicyclists become aware of the location of the facility it will be supported by the bicycling community. We also intend to meet with the members of the Tucson-Pima County Bicycle Advisory Committee to identify strategies we can utilize to achieve this goal.

Please let me know if you have any questions.

Very truly yours,

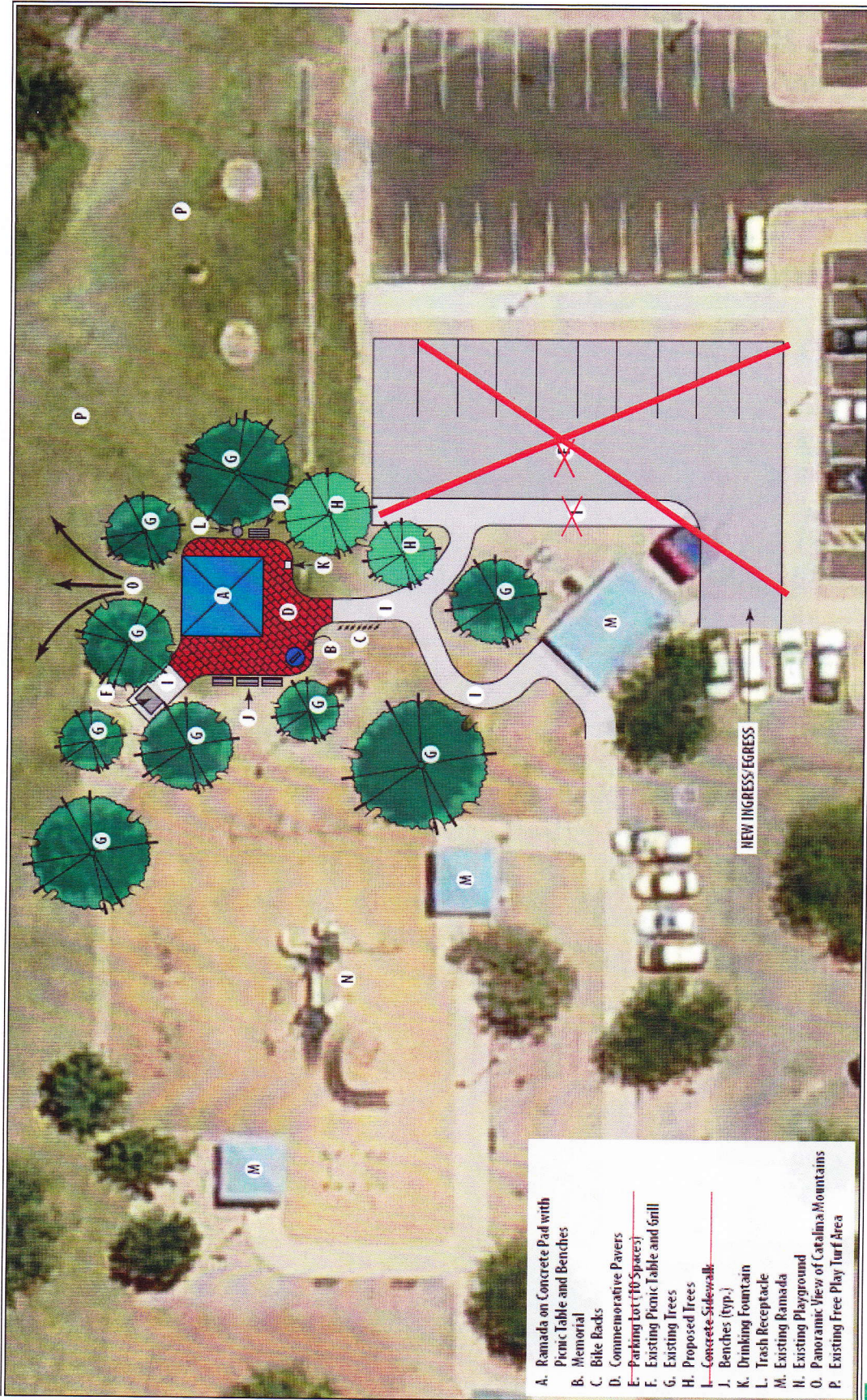
A handwritten signature in black ink, appearing to read "Priscilla Cornelio". The signature is fluid and cursive, with a large loop at the end.

Priscilla S. Cornelio, P.E.
Director

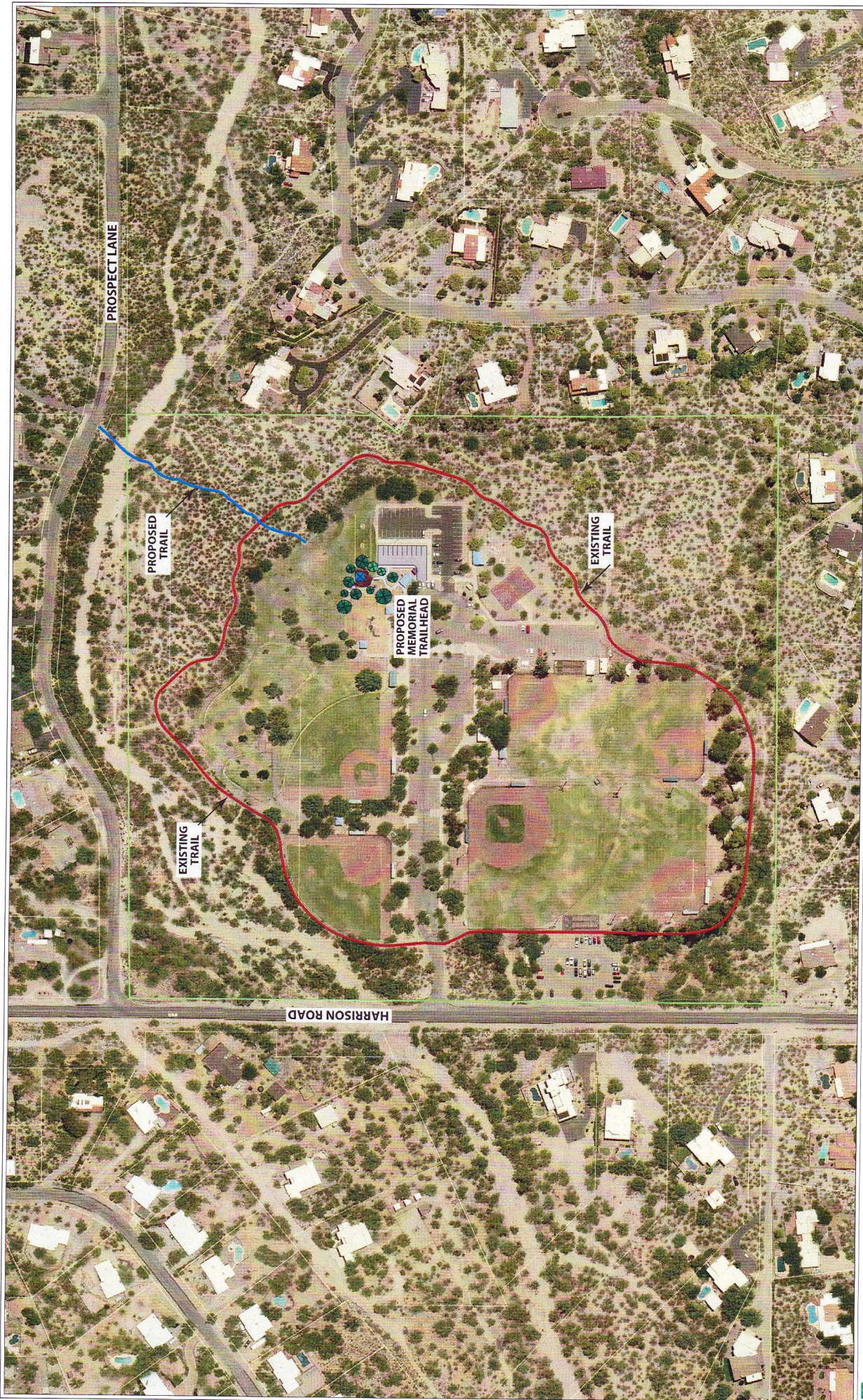
PSC:sap

Attachment

- c: The Honorable Ray Carroll, Board of Supervisor, District 4
- C.H. Huckelberry, County Administrator
- John M. Bernal, Deputy County Administrator
- Carlo DiPilato, Division Manager, Natural Resources Parks and Recreation
- Annabelle Valenzuela, Community Relations Manager



- A. Ramada on Concrete Pad with Picnic Table and Benches
- B. Memorial
- C. Bike Racks
- D. Commemorative Pavers
- E. Parking Lot (10 Spaces)
- F. Existing Picnic Table and Grill
- G. Existing Trees
- H. Proposed Trees
- I. Concrete Sidewalk
- J. Benches (typ.)
- K. Drinking Fountain
- L. Trash Receptacle
- M. Existing Ramada
- N. Existing Playground
- O. Panoramic View of Catalina Mountains
- P. Existing Free Play Turf Area



PROSPECT LANE

PROPOSED TRAIL

EXISTING TRAIL

MEMORIAL TRAIL HEAD

EXISTING TRAIL

HARRISON ROAD



MCDONALD DISTRICT PARK
MT. LEMMON BICYCLIST MEMORIAL TRAIL HEAD

