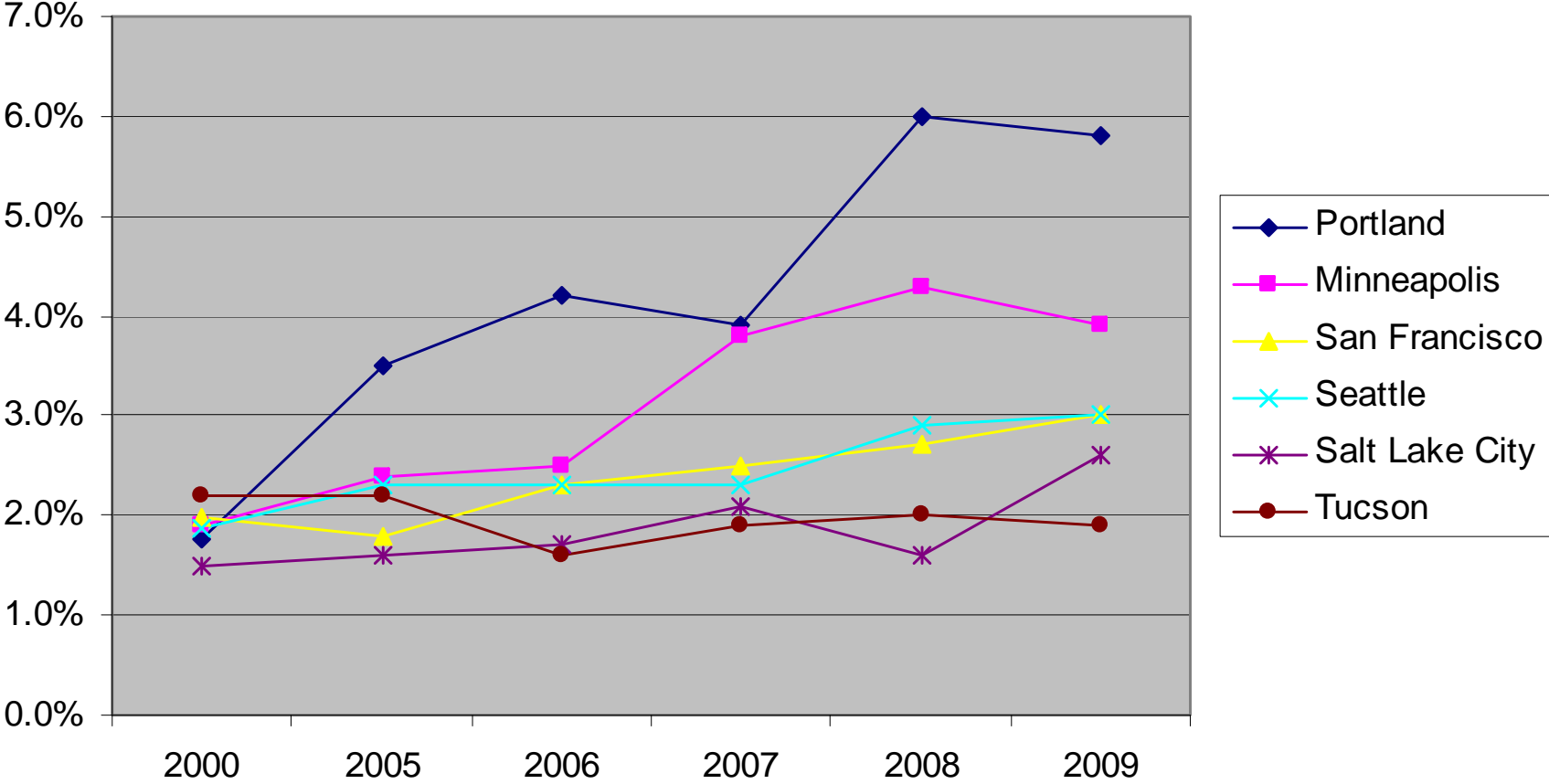


# Census Bike Data

## Top 6 Cities

Compiled by Tom Thivener, Bicycle & Pedestrian Program  
Manager, City of Tucson

### Biking to Work - Top 6 Major Cities



Source: Census 2000 and ACS Surveys

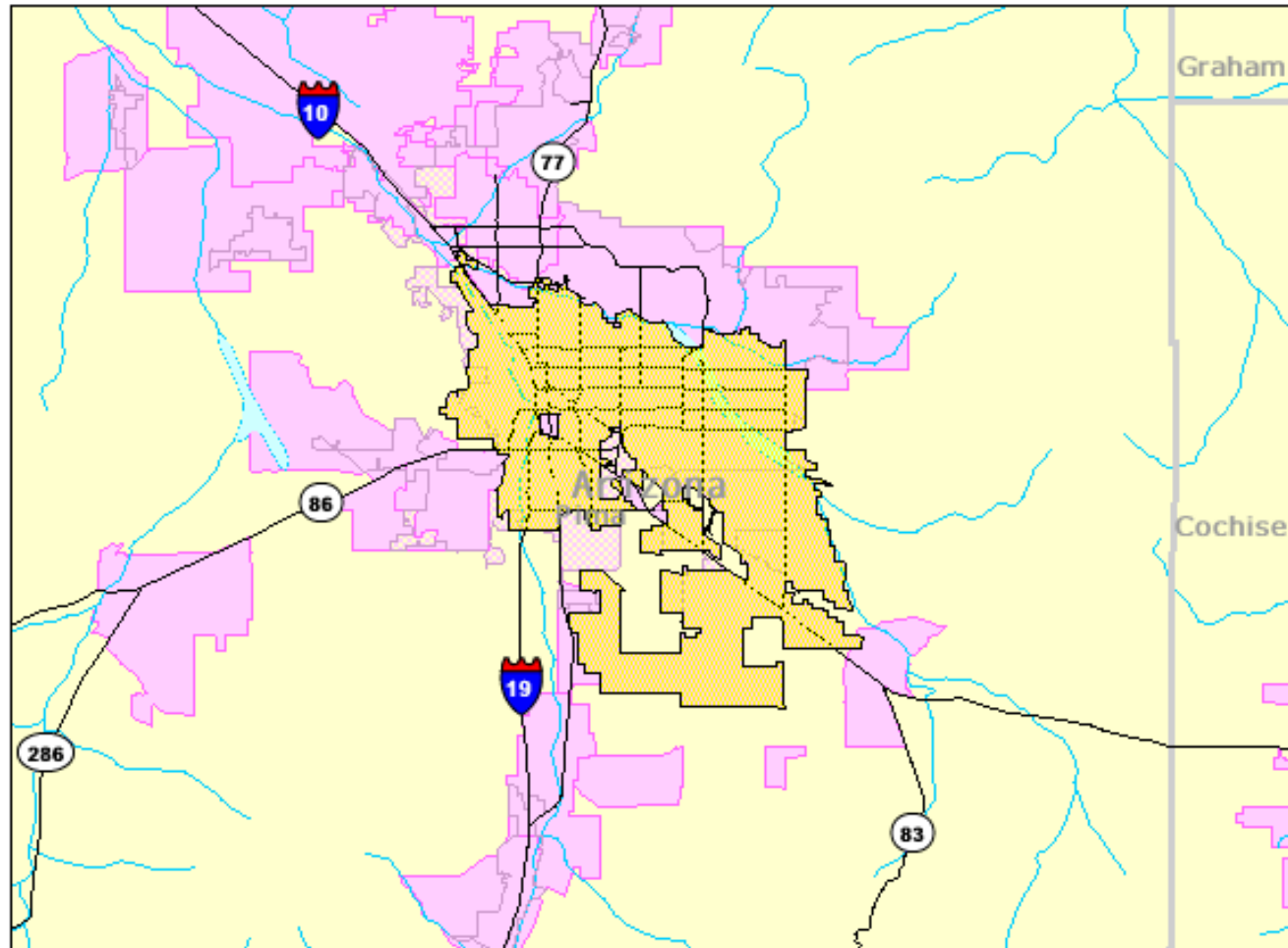
# Tucson Place

## Boundaries

- State
- '08 County
- '08 Co Sub
- '08 Place
- '08 Place
- '00 Urban Area
- '00 Urban Area

## Features

- Major Road
- Stream/Waterbody
- Stream/Waterbody



65 miles across

Close

## Tucson city, Arizona

### S0801. Commuting Characteristics by Sex ?

Data Set: 2006-2008 American Community Survey 3-Year Estimates

Survey: American Community Survey

NOTE. For information on confidentiality protection, sampling error, nonsampling error, and definitions, see [Survey Methodology](#).

Subject	Total	Margin of Error	Male	Margin of Error	Female	Margin of Error
<b>Workers 16 years and over</b>	<b>242,858</b>	<b>+/-3,895</b>	<b>130,893</b>	<b>+/-2,697</b>	<b>111,965</b>	<b>+/-2,341</b>
<b>MEANS OF TRANSPORTATION TO WORK</b>						
Car, truck, or van	84.4%	+/-0.9	83.7%	+/-1.3	85.3%	+/-1.2
Drove alone	72.2%	+/-1.1	71.3%	+/-1.3	73.3%	+/-1.6
Carpooled	12.2%	+/-0.8	12.4%	+/-1.0	11.9%	+/-1.1
In 2-person carpool	9.8%	+/-0.7	9.7%	+/-0.9	9.9%	+/-0.9
In 3-person carpool	1.6%	+/-0.3	1.8%	+/-0.4	1.5%	+/-0.4
In 4-or-more person carpool	0.7%	+/-0.1	0.9%	+/-0.2	0.5%	+/-0.2
Workers per car, truck, or van	1.28	+/-0.01	1.30	+/-0.02	1.27	+/-0.02
Public transportation (excluding taxicab)	4.1%	+/-0.5	3.9%	+/-0.7	4.3%	+/-0.7
Walked	3.8%	+/-0.4	4.1%	+/-0.6	3.5%	+/-0.6
Bicycle	1.8%	+/-0.3	2.5%	+/-0.5	1.1%	+/-0.3
Taxicab, motorcycle, or other means	2.1%	+/-0.3	2.8%	+/-0.6	1.4%	+/-0.4
Worked at home	3.6%	+/-0.5	2.9%	+/-0.5	4.5%	+/-0.6

## Tucson city, Arizona

### S0801. Commuting Characteristics by Sex

Data Set: 2009 American Community Survey 1-Year Estimates

Survey: American Community Survey

NOTE: For information on confidentiality protection, sampling error, nonsampling error, and definitions, see [Survey Methodology](#).

Subject	Total	Margin of Error	Male	Margin of Error	Female	Margin of Error
<b>Workers 16 years and over</b>	<b>237,078</b>	<b>+/-6,136</b>	<b>123,477</b>	<b>+/-4,769</b>	<b>113,601</b>	<b>+/-4,289</b>
<b>MEANS OF TRANSPORTATION TO WORK</b>						
Car, truck, or van	84.0%	+/-1.7	84.2%	+/-2.1	83.8%	+/-2.3
Drove alone	72.4%	+/-2.2	71.8%	+/-2.6	73.1%	+/-2.8
Carpooled	11.6%	+/-1.2	12.4%	+/-1.7	10.7%	+/-1.5
In 2-person carpool	9.6%	+/-1.1	10.3%	+/-1.5	8.8%	+/-1.4
In 3-person carpool	1.3%	+/-0.4	1.3%	+/-0.6	1.3%	+/-0.5
In 4-or-more person carpool	0.7%	+/-0.3	0.8%	+/-0.5	0.6%	+/-0.4
Workers per car, truck, or van	1.08	+/-0.01	1.09	+/-0.01	1.07	+/-0.01
Public transportation (excluding taxicab)	3.3%	+/-0.8	2.7%	+/-0.9	4.0%	+/-1.1
Walked	3.6%	+/-0.8	3.4%	+/-1.3	3.9%	+/-1.0
Bicycle	1.9%	+/-0.5	2.6%	+/-0.8	1.0%	+/-0.5
Taxicab, motorcycle, or other means	3.1%	+/-1.0	3.7%	+/-1.3	2.4%	+/-1.1
Worked at home	4.1%	+/-0.8	3.4%	+/-1.0	4.9%	+/-1.0

## Tucson city, AZ, Tucson, AZ Metropolitan Statistical Area

### S0801. Commuting Characteristics by Sex

Data Set: 2008 American Community Survey 1-Year Estimates

Survey: American Community Survey

NOTE: For information on confidentiality protection, sampling error, nonsampling error, and definitions, see [Survey Methodology](#).

Subject	Total	Margin of Error	Male	Margin of Error	Female	Margin of Error
<b>Workers 16 years and over</b>	<b>246,761</b>	<b>+/-7,188</b>	<b>130,821</b>	<b>+/-4,951</b>	<b>115,940</b>	<b>+/-4,538</b>
<b>MEANS OF TRANSPORTATION TO WORK</b>						
Car, truck, or van	85.0%	+/-1.4	84.7%	+/-2.1	85.3%	+/-1.9
Drove alone	72.7%	+/-2.0	72.8%	+/-2.8	72.6%	+/-2.4
Carpooled	12.3%	+/-1.5	11.9%	+/-1.9	12.6%	+/-2.1
In 2-person carpool	9.7%	+/-1.2	9.2%	+/-1.5	10.2%	+/-1.8
In 3-person carpool	2.1%	+/-0.9	2.1%	+/-1.1	2.0%	+/-1.0
In 4-or-more person carpool	0.5%	+/-0.2	0.6%	+/-0.3	0.5%	+/-0.2
Workers per car, truck, or van	1.28	+/-0.03	1.28	+/-0.04	1.27	+/-0.03
Public transportation (excluding taxicab)	4.4%	+/-0.9	4.2%	+/-1.2	4.7%	+/-1.3
Walked	3.3%	+/-0.8	3.4%	+/-1.0	3.2%	+/-1.0
<b>Bicycle</b>	<b>2.0%</b>	<b>+/-0.6</b>	<b>2.6%</b>	<b>+/-0.9</b>	<b>1.4%</b>	<b>+/-0.5</b>
Taxicab, motorcycle, or other means	2.1%	+/-0.6	2.9%	+/-1.0	1.2%	+/-0.7
Worked at home	3.2%	+/-0.7	2.3%	+/-0.8	4.2%	+/-1.1

## Tucson city, Arizona

### S0801. Commuting Characteristics by Sex

Data Set: 2007 American Community Survey 1-Year Estimates

Survey: American Community Survey

NOTE: For information on confidentiality protection, sampling error, nonsampling error, and definitions, see [Survey Methodology](#).

Subject	Total	Margin of Error	Male	Margin of Error	Female	Margin of Error
<b>Workers 16 years and over</b>	<b>236,760</b>	<b>+/-6,857</b>	<b>128,156</b>	<b>+/-4,665</b>	<b>108,604</b>	<b>+/-5,045</b>
<b>MEANS OF TRANSPORTATION TO WORK</b>						
Car, truck, or van	85.0%	+/-1.6	84.6%	+/-2.2	85.6%	+/-2.1
Drove alone	73.8%	+/-1.9	73.1%	+/-2.4	74.6%	+/-2.5
Carpooled	11.2%	+/-1.4	11.4%	+/-1.8	11.0%	+/-1.8
In 2-person carpool	9.1%	+/-1.3	9.1%	+/-1.7	9.1%	+/-1.6
In 3-person carpool	1.4%	+/-0.4	1.4%	+/-0.6	1.5%	+/-0.7
In 4-or-more person carpool	0.7%	+/-0.3	0.9%	+/-0.5	0.4%	+/-0.2
Workers per car, truck, or van	1.27	+/-0.03	1.28	+/-0.03	1.25	+/-0.03
Public transportation (excluding taxicab)	3.2%	+/-0.7	2.9%	+/-1.0	3.6%	+/-1.0
Walked	4.0%	+/-0.8	4.3%	+/-1.2	3.7%	+/-0.9
Bicycle	1.9%	+/-0.6	2.6%	+/-0.9	1.0%	+/-0.5
Taxicab, motorcycle, or other means	2.0%	+/-0.6	2.3%	+/-0.8	1.7%	+/-0.8
Worked at home	3.9%	+/-0.7	3.4%	+/-0.9	4.4%	+/-1.0

## Tucson city, Arizona

### S0801. Commuting Characteristics by Sex ?

Data Set: 2006 American Community Survey

Survey: American Community Survey

NOTE. For information on confidentiality protection, sampling error, nonsampling error, and definitions, see [Survey Methodology](#).

Subject	Total	Margin of Error	Male	Margin of Error	Female	Margin of Error
Workers 16 years and over	238,498	+/-6,465	130,018	+/-4,752	108,480	+/-3,745
<b>MEANS OF TRANSPORTATION TO WORK</b>						
Car, truck, or van	83.9%	+/-1.4	82.9%	+/-2.3	85.1%	+/-1.9
Drove alone	70.4%	+/-1.8	68.5%	+/-2.7	72.6%	+/-2.5
Carpooled	13.6%	+/-1.4	14.4%	+/-1.7	12.5%	+/-2.0
In 2-person carpool	10.9%	+/-1.2	11.1%	+/-1.5	10.6%	+/-1.8
In 3-person carpool	1.7%	+/-0.4	2.1%	+/-0.6	1.2%	+/-0.6
In 4-or-more person carpool	1.0%	+/-0.3	1.2%	+/-0.5	0.7%	+/-0.4
Workers per car, truck, or van	1.31	+/-0.03	1.33	+/-0.04	1.27	+/-0.03
Public transportation (excluding taxicab)	4.5%	+/-0.9	4.5%	+/-1.2	4.5%	+/-1.2
Walked	4.2%	+/-1.0	4.5%	+/-1.6	3.8%	+/-1.3
Bicycle	1.6%	+/-0.5	2.2%	+/-0.8	0.8%	+/-0.4
Taxicab, motorcycle, or other means	2.2%	+/-0.6	3.1%	+/-1.0	1.1%	+/-0.6
Worked at home	3.7%	+/-0.7	2.8%	+/-0.7	4.7%	+/-1.2



## Tucson city, Arizona

### S0801. Commuting Characteristics by Sex

Data Set: 2005 American Community Survey

Survey: American Community Survey

NOTE: Data are limited to the household population and exclude the population living in institutions, college dormitories, and other group quarters. For information on confidentiality protection, sampling error, nonsampling error, and definitions, see [Survey Methodology](#).

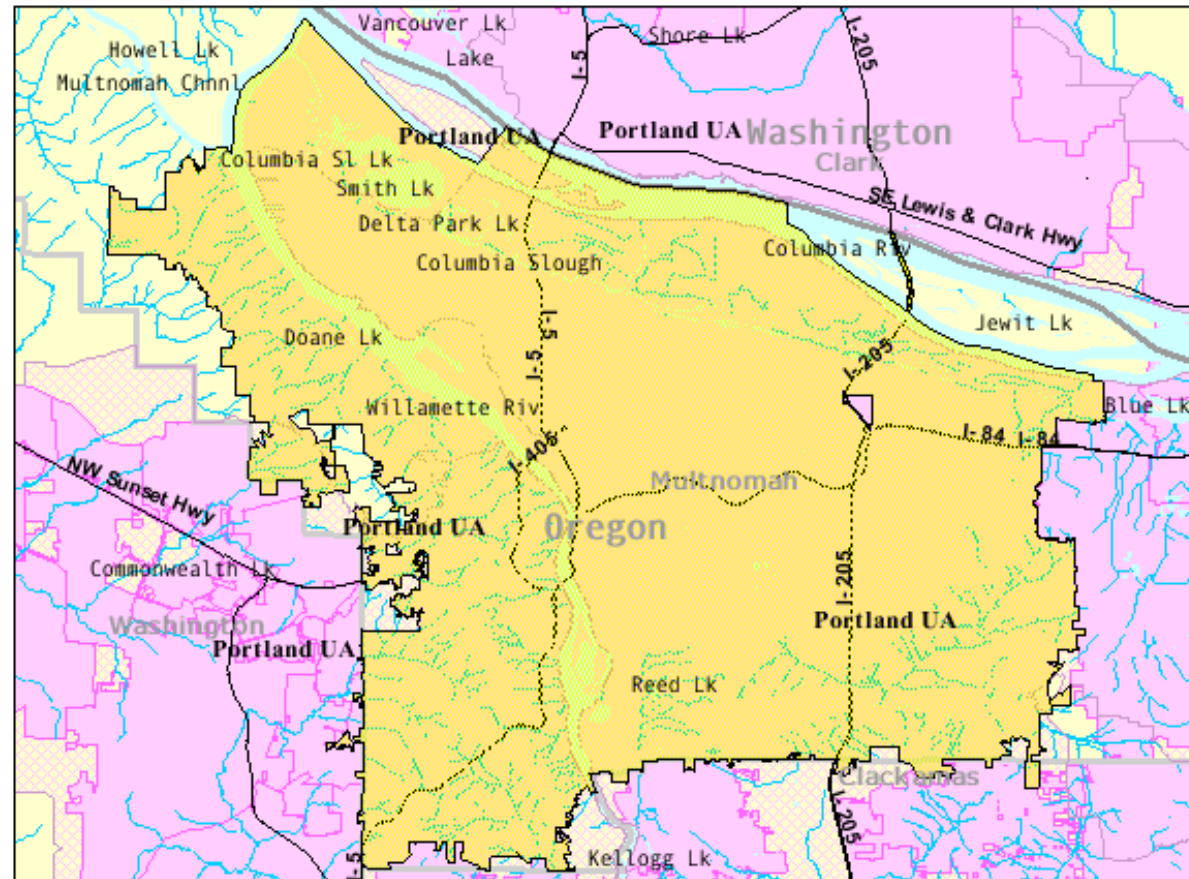
Subject	Total	Margin of Error	Male	Margin of Error	Female	Margin of Error
<b>Workers 16 years and over</b>	<b>233,526</b>	<b>+/-6,511</b>	<b>126,162</b>	<b>+/-4,405</b>	<b>107,364</b>	<b>+/-4,016</b>
<b>MEANS OF TRANSPORTATION TO WORK</b>						
Car, truck, or van	86.8%	+/-1.2	86.7%	+/-1.6	87.0%	+/-1.8
Drove alone	72.6%	+/-1.8	72.2%	+/-2.2	73.1%	+/-2.2
Carpooled	14.3%	+/-1.3	14.5%	+/-1.7	14.0%	+/-1.6
In 2-person carpool	10.8%	+/-1.1	10.4%	+/-1.4	11.2%	+/-1.5
In 3-person carpool	2.0%	+/-0.5	2.4%	+/-0.7	1.5%	+/-0.8
In 4-or-more person carpool	1.5%	+/-0.6	1.7%	+/-0.7	1.2%	+/-0.5
Workers per car, truck, or van	1.27	+/-0.02	1.27	+/-0.03	1.26	+/-0.03
Public transportation (excluding taxicab)	3.3%	+/-0.7	2.8%	+/-0.7	3.7%	+/-1.2
Walked	3.1%	+/-0.6	2.9%	+/-0.9	3.4%	+/-0.9
Bicycle	2.2%	+/-0.6	2.8%	+/-0.9	1.5%	+/-0.6
Taxicab, motorcycle, or other means	1.0%	+/-0.4	1.6%	+/-0.6	0.3%	+/-0.2
Worked at home	3.6%	+/-0.6	3.2%	+/-0.8	4.0%	+/-1.0

# Portland Place

Portland city, Oregon

## Boundaries

- State
  - '08 County
  - '08 Co Sub
  - '08 Place
  - '08 Place
  - '00 Urban Area
  - '00 Urban Area
- ## Features
- Major Road
  - Stream/Waterbody
  - Stream/Waterbody



20 miles across

Close

## Portland city, Oregon

### S0801. Commuting Characteristics by Sex

Data Set: 2009 American Community Survey 1-Year Estimates

Survey: American Community Survey

NOTE: For information on confidentiality protection, sampling error, nonsampling error, and definitions, see [Survey Methodology](#).

Subject	Total	Margin of Error	Male	Margin of Error	Female	Margin of Error
<b>Workers 16 years and over</b>	<b>289,700</b>	<b>+/-5,890</b>	<b>146,063</b>	<b>+/-4,244</b>	<b>143,637</b>	<b>+/-4,527</b>
<b>MEANS OF TRANSPORTATION TO WORK</b>						
Car, truck, or van	70.1%	+/-1.6	69.3%	+/-2.3	70.9%	+/-1.9
Drove alone	61.6%	+/-1.5	61.3%	+/-2.3	61.8%	+/-1.9
Carpooled	8.5%	+/-1.0	7.9%	+/-1.3	9.2%	+/-1.2
In 2-person carpool	7.5%	+/-1.0	7.0%	+/-1.2	8.0%	+/-1.2
In 3-person carpool	0.5%	+/-0.3	0.6%	+/-0.3	0.5%	+/-0.3
In 4-or-more person carpool	0.5%	+/-0.2	0.3%	+/-0.2	0.6%	+/-0.4
Workers per car, truck, or van	1.07	+/-0.01	1.06	+/-0.01	1.07	+/-0.01
Public transportation (excluding taxicab)	11.5%	+/-1.0	10.9%	+/-1.7	12.2%	+/-1.3
Walked	5.6%	+/-0.9	5.9%	+/-1.1	5.2%	+/-1.0
Bicycle	5.8%	+/-0.8	7.0%	+/-1.1	4.6%	+/-1.0
Taxicab, motorcycle, or other means	1.0%	+/-0.3	1.2%	+/-0.4	0.9%	+/-0.3
Worked at home	5.9%	+/-0.8	5.7%	+/-0.9	6.2%	+/-1.1

## Portland city, Oregon

### S0801. Commuting Characteristics by Sex

Data Set: 2008 American Community Survey 1-Year Estimates

Survey: American Community Survey

NOTE: For information on confidentiality protection, sampling error, nonsampling error, and definitions, see [Survey Methodology](#).

Subject	Total	Margin of Error	Male	Margin of Error	Female	Margin of Error
<b>Workers 16 years and over</b>	<b>291,579</b>	<b>+/-5,858</b>	<b>150,827</b>	<b>+/-4,468</b>	<b>140,752</b>	<b>+/-3,368</b>
<b>MEANS OF TRANSPORTATION TO WORK</b>						
Car, truck, or van	68.8%	+/-1.5	67.4%	+/-2.2	70.4%	+/-1.6
Drove alone	60.4%	+/-1.5	59.4%	+/-2.0	61.6%	+/-1.7
Carpooled	8.4%	+/-1.0	8.1%	+/-1.3	8.7%	+/-1.1
In 2-person carpool	6.6%	+/-0.8	6.3%	+/-1.1	7.0%	+/-1.0
In 3-person carpool	1.2%	+/-0.4	1.1%	+/-0.5	1.2%	+/-0.5
In 4-or-more person carpool	0.6%	+/-0.2	0.7%	+/-0.4	0.5%	+/-0.2
Workers per car, truck, or van	1.56	+/-0.03	1.59	+/-0.05	1.52	+/-0.04
Public transportation (excluding taxicab)	12.6%	+/-1.2	13.2%	+/-1.6	11.9%	+/-1.4
Walked	5.3%	+/-0.7	5.4%	+/-1.1	5.2%	+/-0.8
Bicycle	6.0%	+/-0.7	7.4%	+/-1.1	4.5%	+/-0.8
Taxicab, motorcycle, or other means	0.8%	+/-0.3	0.9%	+/-0.3	0.8%	+/-0.4
Worked at home	6.5%	+/-0.7	5.8%	+/-1.0	7.3%	+/-0.9

## Portland city, Oregon

### S0801. Commuting Characteristics by Sex

Data Set: 2007 American Community Survey 1-Year Estimates

Survey: American Community Survey

NOTE: For information on confidentiality protection, sampling error, nonsampling error, and definitions, see [Survey Methodology](#).

Subject	Total	Margin of Error	Male	Margin of Error	Female	Margin of Error
Workers 16 years and over	280,933	+/-6,213	148,805	+/-4,346	132,128	+/-4,003
<b>MEANS OF TRANSPORTATION TO WORK</b>						
Car, truck, or van	73.4%	+/-1.6	74.0%	+/-2.2	72.7%	+/-2.1
Drove alone	63.6%	+/-2.0	64.2%	+/-2.4	62.8%	+/-2.4
Carpooled	9.8%	+/-1.2	9.8%	+/-1.6	9.8%	+/-1.3
In 2-person carpool	7.9%	+/-1.0	7.7%	+/-1.3	8.1%	+/-1.3
In 3-person carpool	1.6%	+/-0.7	1.7%	+/-1.1	1.5%	+/-0.4
In 4-or-more person carpool	0.3%	+/-0.2	0.4%	+/-0.3	0.3%	+/-0.2
Workers per car, truck, or van	1.47	+/-0.04	1.45	+/-0.05	1.48	+/-0.05
Public transportation (excluding taxicab)	11.2%	+/-1.1	10.4%	+/-1.5	12.2%	+/-1.5
Walked	4.4%	+/-0.7	4.4%	+/-1.0	4.3%	+/-0.9
Bicycle	3.9%	+/-0.6	4.9%	+/-0.9	2.8%	+/-0.7
Taxicab, motorcycle, or other means	0.8%	+/-0.2	0.9%	+/-0.3	0.7%	+/-0.3
Worked at home	6.4%	+/-0.9	5.4%	+/-1.1	7.4%	+/-1.2

## Portland city, Oregon

### S0801. Commuting Characteristics by Sex ?

Data Set: 2006 American Community Survey

Survey: American Community Survey

NOTE: For information on confidentiality protection, sampling error, nonsampling error, and definitions, see [Survey Methodology](#).

Subject	Total	Margin of Error	Male	Margin of Error	Female	Margin of Error
Workers 16 years and over	276,465	+/-5,791	147,363	+/-3,824	129,102	+/-3,796
<b>MEANS OF TRANSPORTATION TO WORK</b>						
Car, truck, or van	71.1%	+/-1.5	71.1%	+/-1.9	71.0%	+/-2.0
Drove alone	60.6%	+/-1.5	61.2%	+/-2.0	59.9%	+/-2.0
Carpooled	10.5%	+/-1.1	9.9%	+/-1.3	11.1%	+/-1.4
In 2-person carpool	8.5%	+/-1.0	8.0%	+/-1.1	9.0%	+/-1.3
In 3-person carpool	1.5%	+/-0.4	1.5%	+/-0.6	1.5%	+/-0.6
In 4-or-more person carpool	0.5%	+/-0.2	0.5%	+/-0.2	0.6%	+/-0.3
Workers per car, truck, or van	1.53	+/-0.03	1.52	+/-0.04	1.54	+/-0.04
Public transportation (excluding taxicab)	12.6%	+/-1.3	11.5%	+/-1.6	13.9%	+/-1.6
Walked	5.2%	+/-0.7	5.4%	+/-1.0	4.9%	+/-0.9
Bicycle	4.2%	+/-0.8	5.5%	+/-1.1	2.6%	+/-0.7
Taxicab, motorcycle, or other means	0.9%	+/-0.3	1.0%	+/-0.4	0.9%	+/-0.4
Worked at home	6.1%	+/-0.8	5.5%	+/-1.0	6.7%	+/-1.1

## Portland city, Oregon

### S0801. Commuting Characteristics by Sex ?

Data Set: 2005 American Community Survey

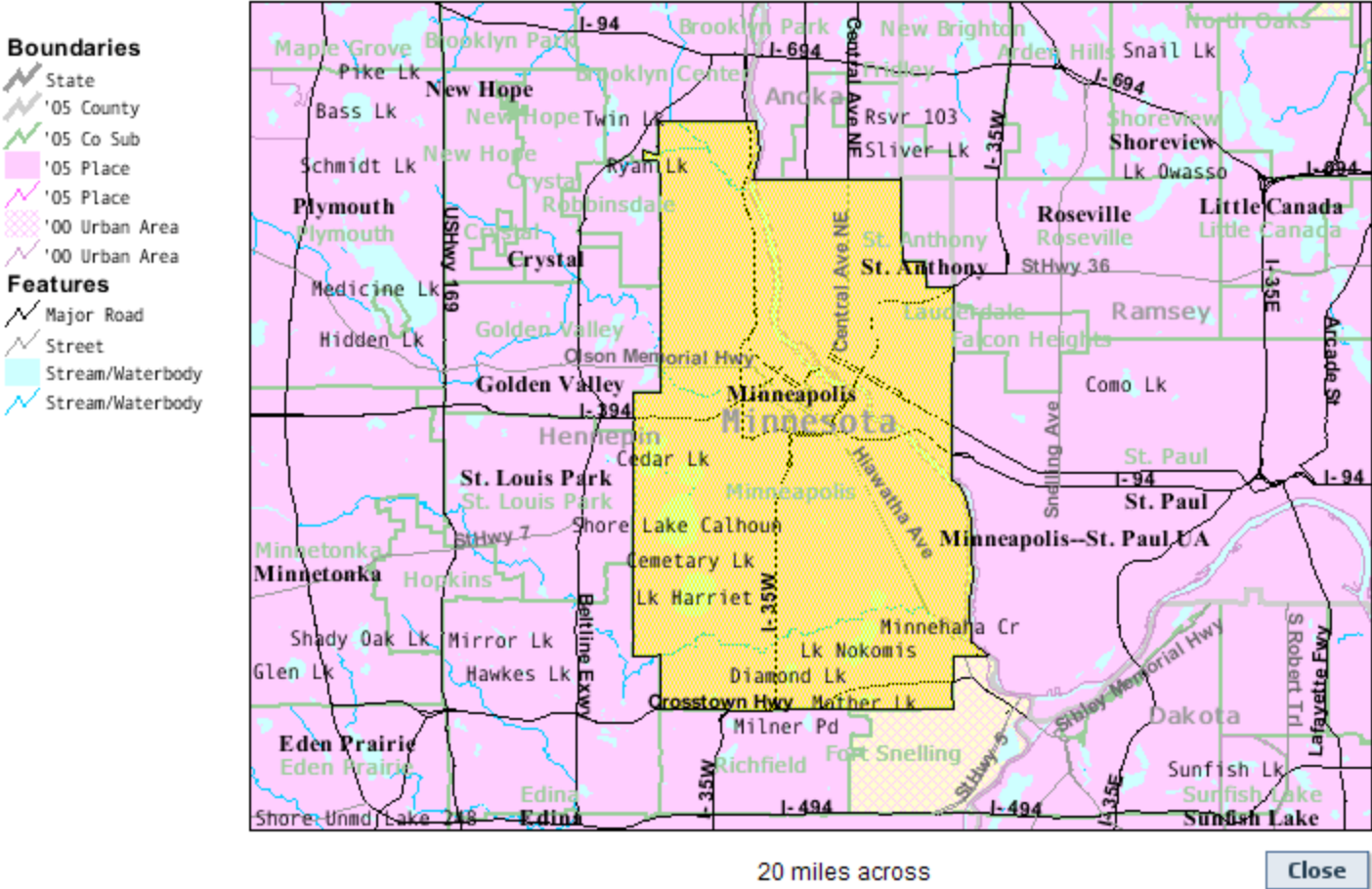
Survey: American Community Survey

NOTE. Data are limited to the household population and exclude the population living in institutions, college dormitories, and other group quarters. For information on confidentiality protection, sampling error, nonsampling error, and definitions, see [Survey Methodology](#).

Subject	Total	Margin of Error	Male	Margin of Error	Female	Margin of Error
<b>Workers 16 years and over</b>	<b>257,510</b>	<b>+/-6,611</b>	<b>138,875</b>	<b>+/-4,527</b>	<b>118,635</b>	<b>+/-3,399</b>
<b>MEANS OF TRANSPORTATION TO WORK</b>						
Car, truck, or van	72.8%	+/-1.3	73.4%	+/-1.7	72.0%	+/-2.2
Drove alone	62.4%	+/-1.3	62.9%	+/-2.0	61.8%	+/-2.2
Carpooled	10.4%	+/-1.1	10.5%	+/-1.6	10.2%	+/-1.2
In 2-person carpool	8.3%	+/-1.0	8.1%	+/-1.2	8.6%	+/-1.1
In 3-person carpool	1.3%	+/-0.5	1.8%	+/-0.9	0.7%	+/-0.3
In 4-or-more person carpool	0.8%	+/-0.3	0.6%	+/-0.3	1.0%	+/-0.5
Workers per car, truck, or van	1.49	+/-0.03	1.48	+/-0.04	1.50	+/-0.05
Public transportation (excluding taxicab)	13.3%	+/-1.0	12.1%	+/-1.5	14.6%	+/-1.4
Walked	4.3%	+/-0.7	4.0%	+/-0.9	4.7%	+/-1.1
Bicycle	3.5%	+/-0.6	4.4%	+/-0.8	2.4%	+/-0.9
Taxicab, motorcycle, or other means	0.9%	+/-0.3	1.2%	+/-0.5	0.5%	+/-0.3
Worked at home	5.3%	+/-0.7	4.9%	+/-0.9	5.8%	+/-1.1

# Minneapolis Place

Minneapolis city, Minnesota





## Minneapolis city, Minnesota

### S0801. Commuting Characteristics by Sex

Data Set: 2009 American Community Survey 1-Year Estimates

Survey: American Community Survey

NOTE: For information on confidentiality protection, sampling error, nonsampling error, and definitions, see [Survey Methodology](#).

Subject	Total	Margin of Error	Male	Margin of Error	Female	Margin of Error
<b>Workers 16 years and over</b>	<b>208,076</b>	<b>+/-5,268</b>	<b>109,970</b>	<b>+/-3,864</b>	<b>98,106</b>	<b>+/-3,528</b>
<b>MEANS OF TRANSPORTATION TO WORK</b>						
Car, truck, or van	71.0%	+/-1.9	71.4%	+/-2.4	70.6%	+/-2.6
Drove alone	62.2%	+/-2.0	62.3%	+/-2.5	62.1%	+/-2.9
Carpooled	8.8%	+/-1.1	9.1%	+/-1.6	8.5%	+/-1.4
In 2-person carpool	6.8%	+/-0.9	6.5%	+/-1.2	7.1%	+/-1.3
In 3-person carpool	1.0%	+/-0.3	1.1%	+/-0.4	0.9%	+/-0.5
In 4-or-more person carpool	1.0%	+/-0.6	1.5%	+/-1.1	0.5%	+/-0.3
Workers per car, truck, or van	1.07	+/-0.01	1.08	+/-0.02	1.07	+/-0.01
Public transportation (excluding taxicab)	13.1%	+/-1.5	12.6%	+/-1.8	13.7%	+/-1.9
Walked	6.4%	+/-1.1	7.0%	+/-1.4	5.7%	+/-1.3
Bicycle	3.9%	+/-0.7	4.0%	+/-0.8	3.7%	+/-1.0
Taxicab, motorcycle, or other means	1.1%	+/-0.3	1.1%	+/-0.4	1.2%	+/-0.5
Worked at home	4.5%	+/-0.7	4.0%	+/-0.8	5.1%	+/-1.0

## Minneapolis city, Minnesota

### S0801. Commuting Characteristics by Sex ?

Data Set: 2008 American Community Survey 1-Year Estimates

Survey: American Community Survey

NOTE: For information on confidentiality protection, sampling error, nonsampling error, and definitions, see [Survey Methodology](#).

Subject	Total	Margin of Error	Male	Margin of Error	Female	Margin of Error
<b>Workers 16 years and over</b>	<b>191,188</b>	<b>+/-6,183</b>	<b>100,489</b>	<b>+/-4,715</b>	<b>90,699</b>	<b>+/-3,795</b>
<b>MEANS OF TRANSPORTATION TO WORK</b>						
Car, truck, or van	69.7%	+/-1.8	69.0%	+/-2.3	70.4%	+/-2.4
Drove alone	62.7%	+/-1.8	62.5%	+/-2.4	63.0%	+/-2.5
Carpooled	7.0%	+/-1.0	6.5%	+/-1.2	7.5%	+/-1.4
In 2-person carpool	5.6%	+/-0.9	5.3%	+/-1.1	6.0%	+/-1.2
In 3-person carpool	0.8%	+/-0.3	0.8%	+/-0.4	0.9%	+/-0.4
In 4-or-more person carpool	0.5%	+/-0.3	0.4%	+/-0.3	0.6%	+/-0.4
Workers per car, truck, or van	1.52	+/-0.04	1.53	+/-0.05	1.51	+/-0.05
Public transportation (excluding taxicab)	14.4%	+/-1.2	14.1%	+/-1.6	14.8%	+/-1.8
Walked	6.1%	+/-0.8	6.0%	+/-1.1	6.2%	+/-1.2
Bicycle	4.3%	+/-0.7	5.6%	+/-1.2	2.8%	+/-0.9
Taxicab, motorcycle, or other means	0.5%	+/-0.2	0.7%	+/-0.3	0.3%	+/-0.2
Worked at home	5.1%	+/-0.8	4.7%	+/-1.3	5.5%	+/-1.1

## Minneapolis city, Minnesota

### S0801. Commuting Characteristics by Sex ?

Data Set: 2007 American Community Survey 1-Year Estimates

Survey: American Community Survey

NOTE. For information on confidentiality protection, sampling error, nonsampling error, and definitions, see [Survey Methodology](#).

Subject	Total	Margin of Error	Male	Margin of Error	Female	Margin of Error
Workers 16 years and over	189,612	+/-5,694	101,748	+/-4,739	87,864	+/-3,470
<b>MEANS OF TRANSPORTATION TO WORK</b>						
Car, truck, or van	71.0%	+/-1.7	70.9%	+/-2.2	71.1%	+/-2.4
Drove alone	61.1%	+/-1.7	60.1%	+/-2.3	62.2%	+/-2.4
Carpooled	10.0%	+/-1.2	10.9%	+/-1.8	8.9%	+/-1.5
In 2-person carpool	7.4%	+/-1.1	7.8%	+/-1.4	7.0%	+/-1.4
In 3-person carpool	1.5%	+/-0.5	1.4%	+/-0.6	1.6%	+/-0.8
In 4-or-more person carpool	1.0%	+/-0.6	1.7%	+/-1.2	0.3%	+/-0.2
Workers per car, truck, or van	1.53	+/-0.04	1.54	+/-0.05	1.51	+/-0.05
Public transportation (excluding taxicab)	13.4%	+/-1.4	11.7%	+/-1.5	15.2%	+/-2.1
Walked	6.4%	+/-0.7	7.5%	+/-1.3	5.2%	+/-1.0
Bicycle	3.8%	+/-0.8	4.9%	+/-1.2	2.5%	+/-0.8
Taxicab, motorcycle, or other means	0.5%	+/-0.2	0.8%	+/-0.3	0.2%	+/-0.2
Worked at home	4.8%	+/-0.7	4.1%	+/-0.9	5.7%	+/-1.1

## Minneapolis city, Minnesota

### S0801. Commuting Characteristics by Sex

Data Set: 2006 American Community Survey

Survey: American Community Survey

NOTE. For information on confidentiality protection, sampling error, nonsampling error, and definitions, see [Survey Methodology](#).

Subject	Total	Margin of Error	Male	Margin of Error	Female	Margin of Error
Workers 16 years and over	193,591	+/-6,508	102,829	+/-4,510	90,762	+/-4,041
<b>MEANS OF TRANSPORTATION TO WORK</b>						
Car, truck, or van	71.9%	+/-1.8	73.0%	+/-2.5	70.7%	+/-2.4
Drove alone	62.6%	+/-1.9	63.7%	+/-2.6	61.4%	+/-2.4
Carpooled	9.3%	+/-0.9	9.3%	+/-1.3	9.3%	+/-1.3
In 2-person carpool	7.5%	+/-0.8	7.1%	+/-1.1	7.8%	+/-1.2
In 3-person carpool	1.1%	+/-0.4	1.3%	+/-0.6	0.8%	+/-0.4
In 4-or-more person carpool	0.7%	+/-0.3	0.8%	+/-0.4	0.6%	+/-0.4
Workers per car, truck, or van	1.50	+/-0.04	1.47	+/-0.05	1.52	+/-0.05
Public transportation (excluding taxicab)	13.2%	+/-1.3	12.1%	+/-1.8	14.4%	+/-1.7
Walked	7.1%	+/-1.0	6.9%	+/-1.4	7.3%	+/-1.4
Bicycle	2.5%	+/-0.5	2.9%	+/-0.6	2.0%	+/-0.7
Taxicab, motorcycle, or other means	0.9%	+/-0.4	1.0%	+/-0.5	0.7%	+/-0.5
Worked at home	4.5%	+/-0.8	4.0%	+/-1.0	5.0%	+/-1.0

## Minneapolis city, Minnesota

### S0801. Commuting Characteristics by Sex ?

Data Set: 2005 American Community Survey

Survey: American Community Survey

NOTE. Data are limited to the household population and exclude the population living in institutions, college dormitories, and other group quarters. For information on confidentiality protection, sampling error, nonsampling error, and definitions, see [Survey Methodology](#).

Subject	Total	Margin of Error	Male	Margin of Error	Female	Margin of Error
<b>Workers 16 years and over</b>	<b>189,294</b>	<b>+/-6,466</b>	<b>102,790</b>	<b>+/-4,575</b>	<b>86,504</b>	<b>+/-3,914</b>
<b>MEANS OF TRANSPORTATION TO WORK</b>						
Car, truck, or van	75.2%	+/-1.8	76.6%	+/-2.5	73.6%	+/-2.2
Drove alone	62.4%	+/-2.1	62.3%	+/-3.1	62.6%	+/-2.6
Carpooled	12.8%	+/-1.9	14.3%	+/-2.8	11.0%	+/-1.9
In 2-person carpool	10.4%	+/-1.8	11.1%	+/-2.5	9.5%	+/-1.8
In 3-person carpool	1.6%	+/-0.5	1.9%	+/-0.8	1.1%	+/-0.6
In 4-or-more person carpool	0.9%	+/-0.7	1.3%	+/-1.2	0.4%	+/-0.3
Workers per car, truck, or van	1.46	+/-0.04	1.46	+/-0.05	1.47	+/-0.05
Public transportation (excluding taxicab)	12.5%	+/-1.5	10.7%	+/-1.9	14.5%	+/-1.9
Walked	5.8%	+/-1.1	5.5%	+/-1.6	6.2%	+/-1.6
Bicycle	2.4%	+/-0.5	3.6%	+/-0.8	1.0%	+/-0.5
Taxicab, motorcycle, or other means	1.1%	+/-0.3	1.2%	+/-0.5	1.1%	+/-0.5
Worked at home	2.9%	+/-0.5	2.4%	+/-0.6	3.6%	+/-0.8

# Seattle Place

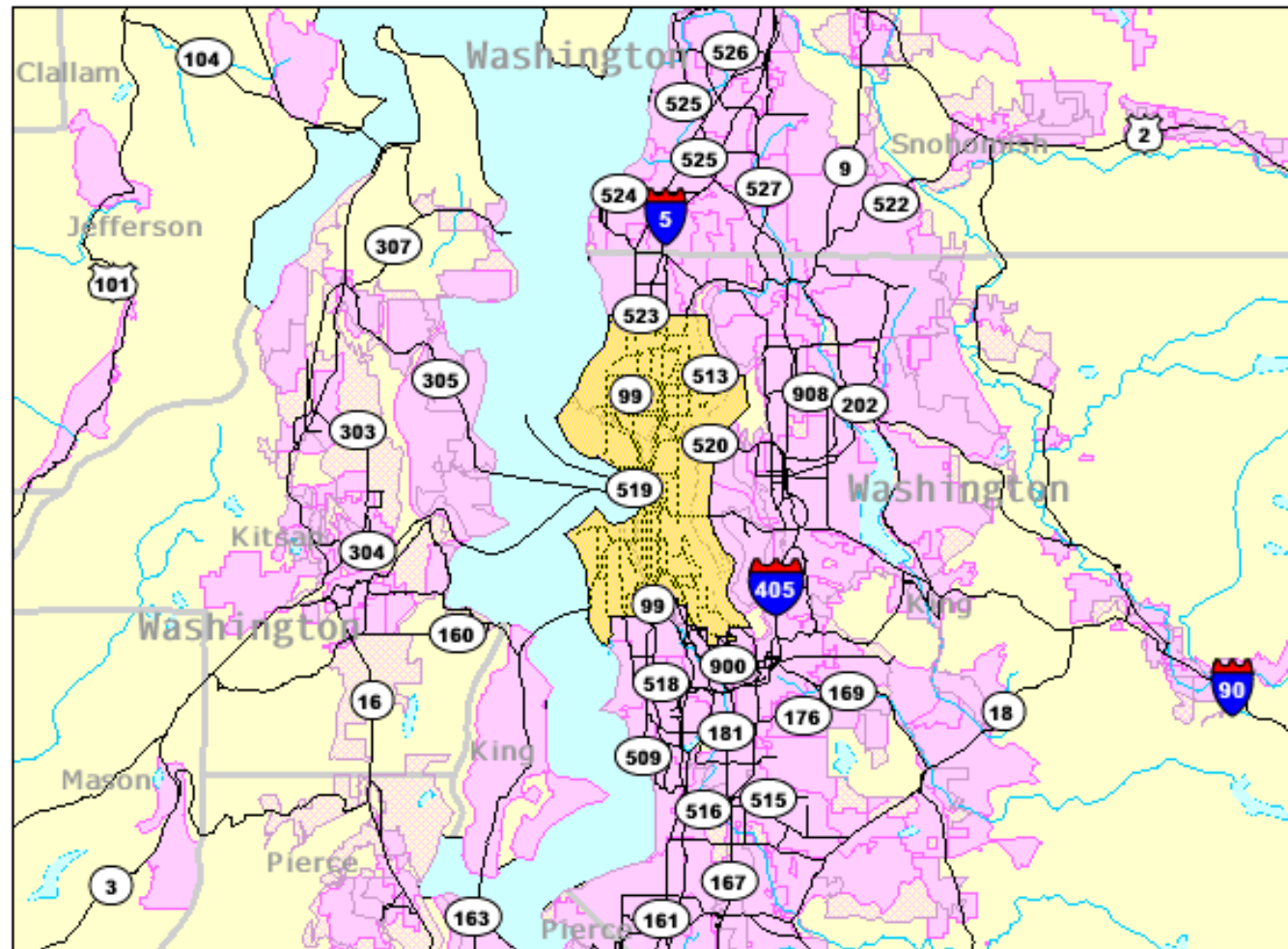
Seattle city, Washington

## Boundaries

- State
- '08 County
- '08 Co Sub
- '08 Place
- '08 Place
- '00 Urban Area
- '00 Urban Area

## Features

- Major Road
- Stream/Waterbody
- Stream/Waterbody



65 miles across

Close

## Seattle city, Washington

### S0801. Commuting Characteristics by Sex

Data Set: 2009 American Community Survey 1-Year Estimates

Survey: American Community Survey

NOTE: For information on confidentiality protection, sampling error, nonsampling error, and definitions, see [Survey Methodology](#).

Subject	Total	Margin of Error	Male	Margin of Error	Female	Margin of Error
<b>Workers 16 years and over</b>	<b>354,740</b>	<b>+/-7,620</b>	<b>185,008</b>	<b>+/-5,056</b>	<b>169,732</b>	<b>+/-5,083</b>
<b>MEANS OF TRANSPORTATION TO WORK</b>						
Car, truck, or van	62.5%	+/-1.5	62.8%	+/-2.2	62.1%	+/-2.0
Drove alone	52.9%	+/-1.7	54.5%	+/-2.2	51.1%	+/-2.2
Carpooled	9.6%	+/-0.9	8.3%	+/-1.1	11.0%	+/-1.3
In 2-person carpool	8.1%	+/-0.9	7.0%	+/-1.1	9.3%	+/-1.2
In 3-person carpool	1.0%	+/-0.3	0.7%	+/-0.3	1.2%	+/-0.5
In 4-or-more person carpool	0.5%	+/-0.2	0.6%	+/-0.3	0.5%	+/-0.2
Workers per car, truck, or van	1.09	+/-0.01	1.08	+/-0.01	1.10	+/-0.01
Public transportation (excluding taxicab)	19.5%	+/-1.4	17.9%	+/-1.8	21.2%	+/-1.8
Walked	7.7%	+/-0.7	7.5%	+/-1.1	7.9%	+/-1.0
Bicycle	3.0%	+/-0.6	4.0%	+/-0.8	1.9%	+/-0.6
Taxicab, motorcycle, or other means	1.4%	+/-0.3	2.1%	+/-0.6	0.7%	+/-0.3
Worked at home	5.9%	+/-0.7	5.7%	+/-0.9	6.2%	+/-1.0

## Seattle city, Washington

### S0801. Commuting Characteristics by Sex

Data Set: 2008 American Community Survey 1-Year Estimates

Survey: American Community Survey

NOTE. For information on confidentiality protection, sampling error, nonsampling error, and definitions, see [Survey Methodology](#).

Subject	Total	Margin of Error	Male	Margin of Error	Female	Margin of Error
Workers 16 years and over	339,061	+/-8,375	179,109	+/-5,517	159,952	+/-5,481
<b>MEANS OF TRANSPORTATION TO WORK</b>						
Car, truck, or van	62.9%	+/-1.6	63.0%	+/-2.1	62.7%	+/-2.1
Drove alone	52.9%	+/-1.5	54.5%	+/-2.1	51.1%	+/-2.0
Carpooled	10.0%	+/-1.0	8.6%	+/-1.1	11.6%	+/-1.3
In 2-person carpool	7.9%	+/-0.9	6.6%	+/-1.0	9.3%	+/-1.3
In 3-person carpool	1.2%	+/-0.5	0.9%	+/-0.6	1.5%	+/-0.6
In 4-or-more person carpool	0.9%	+/-0.3	1.1%	+/-0.4	0.7%	+/-0.3
Workers per car, truck, or van	1.74	+/-0.04	1.72	+/-0.06	1.77	+/-0.06
Public transportation (excluding taxicab)	17.7%	+/-1.2	15.9%	+/-1.6	19.7%	+/-1.5
Walked	9.3%	+/-0.8	9.4%	+/-1.2	9.1%	+/-1.2
Bicycle	2.9%	+/-0.4	3.8%	+/-0.7	1.9%	+/-0.5
Taxicab, motorcycle, or other means	1.1%	+/-0.3	1.5%	+/-0.5	0.7%	+/-0.3
Worked at home	6.1%	+/-0.8	6.3%	+/-1.1	6.0%	+/-1.0



## Seattle city, Washington

### S0801. Commuting Characteristics by Sex

Data Set: 2007 American Community Survey 1-Year Estimates

Survey: American Community Survey

NOTE. For information on confidentiality protection, sampling error, nonsampling error, and definitions, see [Survey Methodology](#).

Subject	Total	Margin of Error	Male	Margin of Error	Female	Margin of Error
Workers 16 years and over	323,233	+/-8,440	174,355	+/-5,495	148,878	+/-5,444
<b>MEANS OF TRANSPORTATION TO WORK</b>						
Car, truck, or van	64.7%	+/-1.5	66.5%	+/-1.9	62.7%	+/-2.0
Drove alone	54.6%	+/-1.3	56.7%	+/-1.9	52.2%	+/-1.8
Carpooled	10.1%	+/-1.1	9.8%	+/-1.4	10.4%	+/-1.4
In 2-person carpool	7.9%	+/-0.9	7.6%	+/-1.1	8.3%	+/-1.3
In 3-person carpool	1.1%	+/-0.4	1.0%	+/-0.5	1.3%	+/-0.5
In 4-or-more person carpool	1.1%	+/-0.4	1.2%	+/-0.5	0.8%	+/-0.5
Workers per car, truck, or van	1.69	+/-0.04	1.64	+/-0.05	1.75	+/-0.05
Public transportation (excluding taxicab)	18.6%	+/-1.3	15.6%	+/-1.7	22.2%	+/-1.8
Walked	8.3%	+/-0.8	8.5%	+/-1.1	8.2%	+/-1.1
Bicycle	2.3%	+/-0.5	3.0%	+/-0.7	1.5%	+/-0.5
Taxicab, motorcycle, or other means	1.2%	+/-0.4	1.5%	+/-0.6	1.0%	+/-0.4
Worked at home	4.8%	+/-0.7	5.0%	+/-0.9	4.6%	+/-0.9

## Seattle city, Washington

### S0801. Commuting Characteristics by Sex ?

Data Set: 2006 American Community Survey

Survey: American Community Survey

NOTE: For information on confidentiality protection, sampling error, nonsampling error, and definitions, see [Survey Methodology](#).

Subject	Total	Margin of Error	Male	Margin of Error	Female	Margin of Error
<b>Workers 16 years and over</b>	<b>318,402</b>	<b>+/-8,951</b>	<b>169,555</b>	<b>+/-6,020</b>	<b>148,847</b>	<b>+/-5,329</b>
<b>MEANS OF TRANSPORTATION TO WORK</b>						
Car, truck, or van	64.8%	+/-1.5	65.7%	+/-1.8	63.8%	+/-2.2
Drove alone	55.2%	+/-1.6	56.2%	+/-1.9	54.0%	+/-2.4
Carpooled	9.7%	+/-0.8	9.5%	+/-1.0	9.8%	+/-1.2
In 2-person carpool	8.0%	+/-0.8	7.7%	+/-0.9	8.3%	+/-1.1
In 3-person carpool	1.0%	+/-0.3	1.0%	+/-0.4	0.9%	+/-0.3
In 4-or-more person carpool	0.7%	+/-0.3	0.9%	+/-0.4	0.5%	+/-0.3
Workers per car, truck, or van	1.68	+/-0.04	1.65	+/-0.05	1.71	+/-0.06
Public transportation (excluding taxicab)	17.8%	+/-1.1	15.8%	+/-1.4	20.1%	+/-1.8
Walked	8.4%	+/-1.0	8.5%	+/-1.3	8.3%	+/-1.2
Bicycle	2.3%	+/-0.4	3.4%	+/-0.7	1.1%	+/-0.4
Taxicab, motorcycle, or other means	1.1%	+/-0.3	1.5%	+/-0.5	0.6%	+/-0.3
Worked at home	5.6%	+/-0.7	5.1%	+/-0.9	6.3%	+/-0.8

## Seattle city, Washington

### S0801. Commuting Characteristics by Sex ?

Data Set: 2005 American Community Survey

Survey: American Community Survey

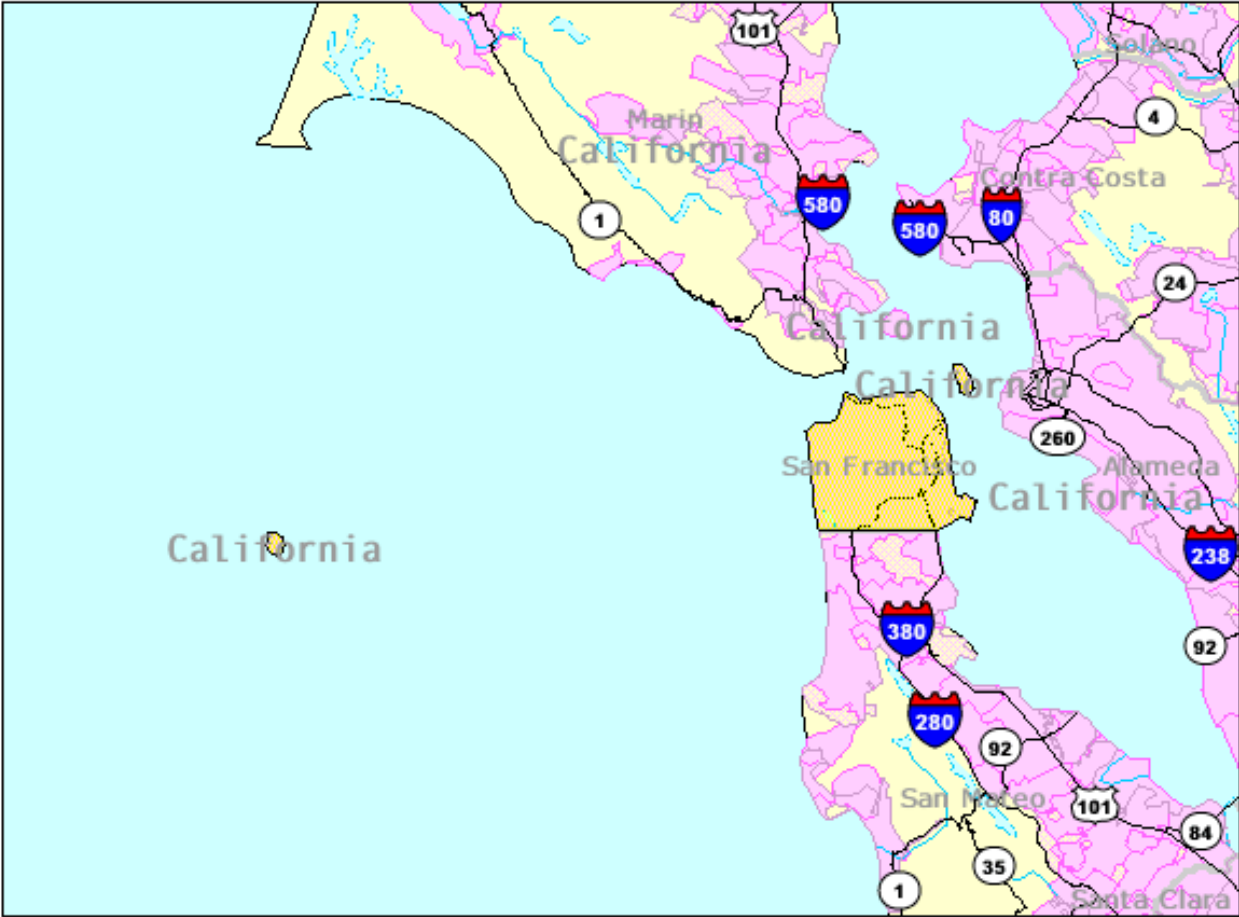
NOTE. Data are limited to the household population and exclude the population living in institutions, college dormitories, and other group quarters. For information on confidentiality protection, sampling error, nonsampling error, and definitions, see [Survey Methodology](#).

Subject	Total	Margin of Error	Male	Margin of Error	Female	Margin of Error
<b>Workers 16 years and over</b>	<b>301,704</b>	<b>+/-8,477</b>	<b>160,853</b>	<b>+/-5,908</b>	<b>140,851</b>	<b>+/-5,587</b>
<b>MEANS OF TRANSPORTATION TO WORK</b>						
Car, truck, or van	67.6%	+/-1.5	68.3%	+/-1.9	66.8%	+/-2.2
Drove alone	57.3%	+/-1.5	59.4%	+/-1.7	54.9%	+/-2.6
Carpooled	10.3%	+/-1.3	9.0%	+/-1.5	11.9%	+/-1.9
In 2-person carpool	8.9%	+/-1.2	7.8%	+/-1.5	10.2%	+/-1.7
In 3-person carpool	1.1%	+/-0.3	0.8%	+/-0.4	1.4%	+/-0.5
In 4-or-more person carpool	0.3%	+/-0.2	0.3%	+/-0.2	0.3%	+/-0.2
Workers per car, truck, or van	1.61	+/-0.03	1.57	+/-0.04	1.65	+/-0.06
Public transportation (excluding taxicab)	17.0%	+/-1.2	15.6%	+/-1.7	18.6%	+/-1.9
Walked	6.9%	+/-0.8	7.8%	+/-1.3	5.8%	+/-0.9
Bicycle	2.3%	+/-0.4	2.8%	+/-0.8	1.7%	+/-0.5
Taxicab, motorcycle, or other means	1.1%	+/-0.4	1.1%	+/-0.5	1.0%	+/-0.5
Worked at home	5.1%	+/-0.8	4.4%	+/-0.8	5.9%	+/-1.2

# San Francisco Place

San Francisco city, California

- Boundaries**
- State
- '08 County
- '08 Co Sub
- '08 Place
- '08 Place
- '00 Urban Area
- '00 Urban Area
- Features**
- Major Road
- Stream/Waterbody
- Stream/Waterbody



65 miles across

Close

## San Francisco city, California

### S0801. Commuting Characteristics by Sex

Data Set: 2009 American Community Survey 1-Year Estimates

Survey: American Community Survey

NOTE: For information on confidentiality protection, sampling error, nonsampling error, and definitions, see [Survey Methodology](#).

Subject	Total	Margin of Error	Male	Margin of Error	Female	Margin of Error
<b>Workers 16 years and over</b>	<b>437,073</b>	<b>+/-6,769</b>	<b>238,277</b>	<b>+/-5,054</b>	<b>198,796</b>	<b>+/-4,903</b>
<b>MEANS OF TRANSPORTATION TO WORK</b>						
Car, truck, or van	46.4%	+/-1.6	47.7%	+/-1.9	44.8%	+/-2.1
Drove alone	38.9%	+/-1.5	40.4%	+/-2.0	37.2%	+/-2.0
Carpooled	7.4%	+/-0.8	7.3%	+/-1.1	7.6%	+/-1.0
In 2-person carpool	5.3%	+/-0.7	5.2%	+/-0.9	5.4%	+/-0.9
In 3-person carpool	1.3%	+/-0.3	1.3%	+/-0.4	1.2%	+/-0.4
In 4-or-more person carpool	0.9%	+/-0.3	0.8%	+/-0.4	1.0%	+/-0.4
Workers per car, truck, or van	1.10	+/-0.01	1.09	+/-0.02	1.11	+/-0.02
Public transportation (excluding taxicab)	31.8%	+/-1.5	30.4%	+/-2.1	33.4%	+/-1.9
Walked	10.3%	+/-1.0	9.2%	+/-1.1	11.8%	+/-1.4
Bicycle	3.0%	+/-0.5	3.8%	+/-0.7	2.1%	+/-0.7
Taxicab, motorcycle, or other means	1.8%	+/-0.4	2.1%	+/-0.5	1.3%	+/-0.4
Worked at home	6.8%	+/-0.8	6.8%	+/-0.9	6.7%	+/-1.1

## San Francisco city, California

### S0801. Commuting Characteristics by Sex

Data Set: 2008 American Community Survey 1-Year Estimates

Survey: American Community Survey

NOTE. For information on confidentiality protection, sampling error, nonsampling error, and definitions, see [Survey Methodology](#).

Subject	Total	Margin of Error	Male	Margin of Error	Female	Margin of Error
Workers 16 years and over	442,831	+/-6,839	242,383	+/-4,716	200,448	+/-4,570
<b>MEANS OF TRANSPORTATION TO WORK</b>						
Car, truck, or van	46.7%	+/-1.4	48.3%	+/-2.0	44.8%	+/-2.1
Drove alone	38.4%	+/-1.4	39.7%	+/-1.9	36.8%	+/-1.9
Carpooled	8.4%	+/-0.8	8.6%	+/-1.0	8.1%	+/-0.9
In 2-person carpool	6.1%	+/-0.8	6.3%	+/-1.0	6.0%	+/-0.9
In 3-person carpool	1.2%	+/-0.3	1.3%	+/-0.3	1.0%	+/-0.4
In 4-or-more person carpool	1.0%	+/-0.3	1.0%	+/-0.4	1.1%	+/-0.4
Workers per car, truck, or van	2.38	+/-0.08	2.30	+/-0.10	2.48	+/-0.12
Public transportation (excluding taxicab)	31.9%	+/-1.3	28.3%	+/-1.9	36.2%	+/-1.9
Walked	9.4%	+/-1.0	10.0%	+/-1.3	8.7%	+/-1.2
Bicycle	2.7%	+/-0.5	3.7%	+/-0.8	1.6%	+/-0.5
Taxicab, motorcycle, or other means	1.8%	+/-0.4	2.0%	+/-0.5	1.7%	+/-0.6
Worked at home	7.5%	+/-0.9	7.9%	+/-1.1	7.0%	+/-1.2

## San Francisco city, California

### S0801. Commuting Characteristics by Sex ?

Data Set: 2007 American Community Survey 1-Year Estimates

Survey: American Community Survey

NOTE. For information on confidentiality protection, sampling error, nonsampling error, and definitions, see [Survey Methodology](#).

Subject	Total	Margin of Error	Male	Margin of Error	Female	Margin of Error
<b>Workers 16 years and over</b>	<b>416,568</b>	<b>+/-6,558</b>	<b>224,475</b>	<b>+/-4,489</b>	<b>192,093</b>	<b>+/-4,592</b>
<b>MEANS OF TRANSPORTATION TO WORK</b>						
Car, truck, or van	45.7%	+/-1.4	47.6%	+/-1.9	43.5%	+/-2.1
Drove alone	38.7%	+/-1.3	40.9%	+/-1.9	36.1%	+/-2.1
Carpooled	7.1%	+/-0.8	6.7%	+/-1.1	7.4%	+/-0.9
In 2-person carpool	5.4%	+/-0.6	5.0%	+/-0.8	5.7%	+/-0.8
In 3-person carpool	0.8%	+/-0.2	0.5%	+/-0.2	1.2%	+/-0.3
In 4-or-more person carpool	0.9%	+/-0.4	1.2%	+/-0.8	0.5%	+/-0.3
Workers per car, truck, or van	2.39	+/-0.07	2.28	+/-0.09	2.53	+/-0.13
Public transportation (excluding taxicab)	33.0%	+/-1.4	29.6%	+/-1.8	36.8%	+/-2.1
Walked	9.7%	+/-0.9	9.7%	+/-1.3	9.6%	+/-1.2
Bicycle	2.5%	+/-0.6	3.4%	+/-0.8	1.5%	+/-0.6
Taxicab, motorcycle, or other means	2.3%	+/-0.5	3.3%	+/-0.8	1.2%	+/-0.5
Worked at home	6.8%	+/-0.8	6.3%	+/-1.0	7.3%	+/-1.1

## San Francisco city, California

### S0801. Commuting Characteristics by Sex

Data Set: 2006 American Community Survey

Survey: American Community Survey

NOTE: For information on confidentiality protection, sampling error, nonsampling error, and definitions, see [Survey Methodology](#).

Subject	Total	Margin of Error	Male	Margin of Error	Female	Margin of Error
Workers 16 years and over	394,646	+/-6,090	217,764	+/-4,096	176,882	+/-4,238
<b>MEANS OF TRANSPORTATION TO WORK</b>						
Car, truck, or van	48.2%	+/-1.5	49.7%	+/-1.9	46.4%	+/-2.1
Drove alone	40.5%	+/-1.4	42.3%	+/-1.9	38.2%	+/-2.0
Carpooled	7.7%	+/-0.9	7.3%	+/-1.1	8.2%	+/-1.1
In 2-person carpool	5.6%	+/-0.7	5.2%	+/-0.8	6.0%	+/-0.9
In 3-person carpool	1.2%	+/-0.3	1.1%	+/-0.4	1.3%	+/-0.4
In 4-or-more person carpool	0.9%	+/-0.3	1.0%	+/-0.5	0.9%	+/-0.4
Workers per car, truck, or van	2.28	+/-0.07	2.20	+/-0.09	2.39	+/-0.11
Public transportation (excluding taxicab)	30.3%	+/-1.4	27.6%	+/-1.8	33.6%	+/-1.9
Walked	9.6%	+/-0.9	9.9%	+/-1.2	9.2%	+/-1.2
Bicycle	2.3%	+/-0.3	2.3%	+/-0.5	2.3%	+/-0.5
Taxicab, motorcycle, or other means	2.1%	+/-0.4	3.0%	+/-0.8	1.0%	+/-0.4
Worked at home	7.6%	+/-0.8	7.6%	+/-0.9	7.5%	+/-1.2



## San Francisco city, California

### S0801. Commuting Characteristics by Sex

Data Set: 2005 American Community Survey

Survey: American Community Survey

NOTE: Data are limited to the household population and exclude the population living in institutions, college dormitories, and other group quarters. For information on confidentiality protection, sampling error, nonsampling error, and definitions, see [Survey Methodology](#).

Subject	Total	Margin of Error	Male	Margin of Error	Female	Margin of Error
Workers 16 years and over	381,922	+/-4,841	204,114	+/-3,576	177,808	+/-3,545
<b>MEANS OF TRANSPORTATION TO WORK</b>						
Car, truck, or van	48.0%	+/-1.7	49.3%	+/-1.9	46.6%	+/-2.3
Drove alone	39.7%	+/-1.4	41.4%	+/-1.8	37.8%	+/-1.7
Carpooled	8.3%	+/-1.0	7.9%	+/-1.1	8.8%	+/-1.3
In 2-person carpool	6.4%	+/-0.9	5.9%	+/-0.9	6.9%	+/-1.2
In 3-person carpool	1.0%	+/-0.3	0.8%	+/-0.3	1.2%	+/-0.4
In 4-or-more person carpool	1.0%	+/-0.3	1.2%	+/-0.5	0.7%	+/-0.3
Workers per car, truck, or van	2.30	+/-0.08	2.23	+/-0.09	2.39	+/-0.11
Public transportation (excluding taxicab)	32.7%	+/-1.5	29.9%	+/-1.7	35.8%	+/-2.0
Walked	9.6%	+/-0.8	9.7%	+/-1.1	9.5%	+/-1.1
Bicycle	1.8%	+/-0.4	2.5%	+/-0.7	1.1%	+/-0.4
Taxicab, motorcycle, or other means	1.5%	+/-0.3	2.2%	+/-0.5	0.8%	+/-0.3
Worked at home	6.3%	+/-0.7	6.4%	+/-1.1	6.2%	+/-1.0

# Salt Lake City Place

## Salt Lake City city, Utah

### S0801. Commuting Characteristics by Sex

Data Set: 2009 American Community Survey 1-Year Estimates

Survey: American Community Survey

NOTE. For information on confidentiality protection, sampling error, nonsampling error, and definitions, see [Survey Methodology](#).

Subject	Total	Margin of Error	Male	Margin of Error	Female	Margin of Error
<b>Workers 16 years and over</b>	<b>97,119</b>	<b>+/-3,817</b>	<b>53,352</b>	<b>+/-3,283</b>	<b>43,767</b>	<b>+/-3,105</b>
<b>MEANS OF TRANSPORTATION TO WORK</b>						
Car, truck, or van	79.9%	+/-2.2	76.1%	+/-3.7	84.5%	+/-2.5
Drove alone	69.9%	+/-2.7	66.4%	+/-4.1	74.2%	+/-3.4
Carpooled	10.0%	+/-1.6	9.8%	+/-2.2	10.2%	+/-2.3
In 2-person carpool	7.5%	+/-1.3	7.3%	+/-2.0	7.8%	+/-1.9
In 3-person carpool	1.3%	+/-0.6	0.6%	+/-0.4	2.0%	+/-1.2
In 4-or-more person carpool	1.2%	+/-0.7	1.9%	+/-1.0	0.4%	+/-0.4
Workers per car, truck, or van	1.07	+/-0.01	1.08	+/-0.02	1.07	+/-0.02
Public transportation (excluding taxicab)	5.6%	+/-1.5	6.8%	+/-2.4	4.1%	+/-1.5
Walked	5.9%	+/-1.4	6.0%	+/-1.7	5.7%	+/-2.0
Bicycle	2.6%	+/-0.7	3.7%	+/-1.2	1.3%	+/-0.8
Taxicab, motorcycle, or other means	2.5%	+/-1.2	3.9%	+/-2.2	0.9%	+/-0.8
Worked at home	3.5%	+/-1.0	3.4%	+/-1.4	3.5%	+/-1.2

## Salt Lake City city, Utah

### S0801. Commuting Characteristics by Sex

Data Set: 2008 American Community Survey 1-Year Estimates

Survey: American Community Survey

NOTE: For information on confidentiality protection, sampling error, nonsampling error, and definitions, see [Survey Methodology](#).

Subject	Total	Margin of Error	Male	Margin of Error	Female	Margin of Error
<b>Workers 16 years and over</b>	<b>98,499</b>	<b>+/-5,678</b>	<b>55,169</b>	<b>+/-4,404</b>	<b>43,330</b>	<b>+/-3,099</b>
<b>MEANS OF TRANSPORTATION TO WORK</b>						
Car, truck, or van	80.7%	+/-2.4	82.0%	+/-2.8	79.1%	+/-3.5
Drove alone	69.5%	+/-2.7	69.8%	+/-3.7	69.1%	+/-4.1
Carpooled	11.2%	+/-2.1	12.2%	+/-2.9	10.0%	+/-2.5
In 2-person carpool	7.8%	+/-1.5	7.6%	+/-1.8	8.0%	+/-2.3
In 3-person carpool	1.8%	+/-1.0	2.1%	+/-1.4	1.5%	+/-1.0
In 4-or-more person carpool	1.6%	+/-1.1	2.4%	+/-1.9	0.5%	+/-0.7
Workers per car, truck, or van	1.34	+/-0.04	1.34	+/-0.06	1.36	+/-0.07
Public transportation (excluding taxicab)	5.9%	+/-1.4	6.3%	+/-1.9	5.2%	+/-2.0
Walked	5.4%	+/-1.4	4.8%	+/-1.8	6.1%	+/-2.1
Bicycle	1.6%	+/-0.6	2.1%	+/-0.9	1.1%	+/-0.7
Taxicab, motorcycle, or other means	1.0%	+/-0.5	1.0%	+/-0.8	1.0%	+/-0.7
Worked at home	5.4%	+/-1.4	3.8%	+/-1.5	7.5%	+/-2.3

## Salt Lake City city, Utah

### S0801. Commuting Characteristics by Sex ?

Data Set: 2008 American Community Survey 1-Year Estimates

Survey: American Community Survey

NOTE: For information on confidentiality protection, sampling error, nonsampling error, and definitions, see

[Survey Methodology](#).

Subject	Total	Margin of Error	Male	Margin of Error	Female	Margin of Error
<b>Workers 16 years and over</b>	<b>98,499</b>	<b>+/-5,678</b>	<b>55,169</b>	<b>+/-4,404</b>	<b>43,330</b>	<b>+/-3,099</b>
<b>MEANS OF TRANSPORTATION TO WORK</b>						
Car, truck, or van	80.7%	+/-2.4	82.0%	+/-2.8	79.1%	+/-3.5
Drove alone	69.5%	+/-2.7	69.8%	+/-3.7	69.1%	+/-4.1
Carpooled	11.2%	+/-2.1	12.2%	+/-2.9	10.0%	+/-2.5
In 2-person carpool	7.8%	+/-1.5	7.6%	+/-1.8	8.0%	+/-2.3
In 3-person carpool	1.8%	+/-1.0	2.1%	+/-1.4	1.5%	+/-1.0
In 4-or-more person carpool	1.6%	+/-1.1	2.4%	+/-1.9	0.5%	+/-0.7
Workers per car, truck, or van	1.34	+/-0.04	1.34	+/-0.06	1.36	+/-0.07
Public transportation (excluding taxicab)	5.9%	+/-1.4	6.3%	+/-1.9	5.2%	+/-2.0
Walked	5.4%	+/-1.4	4.8%	+/-1.8	6.1%	+/-2.1
Bicycle	1.6%	+/-0.6	2.1%	+/-0.9	1.1%	+/-0.7
Taxicab, motorcycle, or other means	1.0%	+/-0.5	1.0%	+/-0.8	1.0%	+/-0.7
Worked at home	5.4%	+/-1.4	3.8%	+/-1.5	7.5%	+/-2.3

## Salt Lake City city, Utah

### S0801. Commuting Characteristics by Sex ?

Data Set: 2007 American Community Survey 1-Year Estimates

Survey: American Community Survey

NOTE: For information on confidentiality protection, sampling error, nonsampling error, and definitions, see [Survey Methodology](#).

Subject	Total	Margin of Error	Male	Margin of Error	Female	Margin of Error
<b>Workers 16 years and over</b>	<b>100,449</b>	<b>+/-4,462</b>	<b>57,085</b>	<b>+/-3,374</b>	<b>43,364</b>	<b>+/-2,470</b>
<b>MEANS OF TRANSPORTATION TO WORK</b>						
Car, truck, or van	83.3%	+/-1.9	83.0%	+/-2.0	83.7%	+/-3.0
Drove alone	68.9%	+/-2.3	67.4%	+/-3.2	70.9%	+/-3.1
Carpooled	14.4%	+/-1.9	15.7%	+/-3.1	12.7%	+/-2.2
In 2-person carpool	11.1%	+/-1.8	11.4%	+/-2.4	10.6%	+/-2.3
In 3-person carpool	1.7%	+/-1.1	2.1%	+/-1.8	1.2%	+/-0.7
In 4-or-more person carpool	1.6%	+/-1.1	2.1%	+/-1.9	0.9%	+/-0.7
Workers per car, truck, or van	1.33	+/-0.03	1.35	+/-0.04	1.30	+/-0.05
Public transportation (excluding taxicab)	4.8%	+/-1.1	5.0%	+/-1.4	4.6%	+/-1.5
Walked	4.5%	+/-0.9	4.5%	+/-1.0	4.6%	+/-1.2
Bicycle	2.1%	+/-0.8	2.7%	+/-1.1	1.4%	+/-0.9
Taxicab, motorcycle, or other means	1.2%	+/-0.5	1.5%	+/-0.7	0.7%	+/-0.5
Worked at home	4.1%	+/-1.0	3.4%	+/-1.0	5.0%	+/-1.8

## Salt Lake City city, Utah

### S0801. Commuting Characteristics by Sex ?

Data Set: 2006 American Community Survey

Survey: American Community Survey

NOTE. For information on confidentiality protection, sampling error, nonsampling error, and definitions, see [Survey Methodology](#).

Subject	Total	Margin of Error	Male	Margin of Error	Female	Margin of Error
<b>Workers 16 years and over</b>	<b>91,234</b>	<b>+/-5,139</b>	<b>51,340</b>	<b>+/-3,499</b>	<b>39,894</b>	<b>+/-2,992</b>
<b>MEANS OF TRANSPORTATION TO WORK</b>						
Car, truck, or van	82.6%	+/-2.3	82.2%	+/-2.7	83.1%	+/-3.2
Drove alone	69.0%	+/-2.4	69.4%	+/-3.3	68.5%	+/-3.5
Carpooled	13.6%	+/-2.4	12.8%	+/-2.9	14.6%	+/-3.2
In 2-person carpool	11.6%	+/-2.1	10.0%	+/-2.2	13.7%	+/-3.1
In 3-person carpool	1.7%	+/-0.9	2.3%	+/-1.3	1.0%	+/-0.7
In 4-or-more person carpool	0.2%	+/-0.3	0.4%	+/-0.4	0.0%	+/-0.4
Workers per car, truck, or van	1.33	+/-0.04	1.33	+/-0.05	1.32	+/-0.05
Public transportation (excluding taxicab)	6.0%	+/-1.3	4.7%	+/-1.2	7.8%	+/-2.6
Walked	5.3%	+/-1.2	5.7%	+/-1.7	4.8%	+/-1.7
Bicycle	1.7%	+/-0.7	2.8%	+/-1.1	0.2%	+/-0.3
Taxicab, motorcycle, or other means	1.0%	+/-0.5	1.2%	+/-0.7	0.7%	+/-0.5
Worked at home	3.4%	+/-0.8	3.3%	+/-1.2	3.4%	+/-1.0

## Salt Lake City city, Utah

### S0801. Commuting Characteristics by Sex

Data Set: 2005 American Community Survey

Survey: American Community Survey

NOTE: Data are limited to the household population and exclude the population living in institutions, college dormitories, and other group quarters. For information on confidentiality protection, sampling error, nonsampling error, and definitions, see [Survey Methodology](#).

Subject	Total	Margin of Error	Male	Margin of Error	Female	Margin of Error
<b>Workers 16 years and over</b>	<b>92,635</b>	<b>+/-4,699</b>	<b>51,811</b>	<b>+/-3,603</b>	<b>40,824</b>	<b>+/-2,803</b>
<b>MEANS OF TRANSPORTATION TO WORK</b>						
Car, truck, or van	84.7%	+/-1.8	85.1%	+/-2.5	84.2%	+/-2.5
Drove alone	71.5%	+/-2.7	73.5%	+/-3.3	69.1%	+/-3.6
Carpooled	13.2%	+/-2.2	11.6%	+/-2.3	15.1%	+/-3.1
In 2-person carpool	11.5%	+/-2.3	9.9%	+/-2.3	13.5%	+/-3.0
In 3-person carpool	1.1%	+/-0.6	0.9%	+/-0.6	1.4%	+/-0.9
In 4-or-more person carpool	0.5%	+/-0.5	0.8%	+/-0.8	0.1%	+/-0.2
Workers per car, truck, or van	1.29	+/-0.03	1.27	+/-0.04	1.31	+/-0.05
Public transportation (excluding taxicab)	7.0%	+/-1.3	6.1%	+/-1.8	8.1%	+/-2.0
Walked	3.6%	+/-0.9	3.9%	+/-1.2	3.2%	+/-1.4
Bicycle	1.6%	+/-0.7	2.2%	+/-1.2	0.9%	+/-0.5
Taxicab, motorcycle, or other means	0.6%	+/-0.3	0.7%	+/-0.5	0.4%	+/-0.4
Worked at home	2.5%	+/-0.8	1.9%	+/-0.9	3.3%	+/-1.3